

**JAMS** is an easy-to use yet extremely powerful batch job scheduling and application automation solution. As your organization automates more and more processes and applications, you need **JAMS** to manage and schedule the myriad of inter-related processes. Best of all, **JAMS** is suitable for any size organization – from non-profits to Fortune 500 companies. The reliability of **JAMS** is unprecedented, processing tens of millions of batch jobs for hundreds of companies each and every day.

Using **JAMS**, your organization will:

- Reduce Errors from Manual Operations
- Eliminate Latency Issues during Scheduled Runs
- Improve Service Levels
- Significantly Lower your Overall Operational Costs

### Cross-Platform & Cross-Application Scheduling

**JAMS** Scheduler can orchestrate the execution of processes across multiple platforms and applications with ease. From one console, tasks and processes can be managed and run across Windows, UNIX, and Linux servers as well as a host of other operating systems. Application-specific scheduling capabilities are also available for ERP solutions from SAP, Oracle, and MS Dynamics.

### JAMS for .NET: The Developer's Best Friend

As Application Developers write more and more .NET applications, they need access to a solution that can provide back-end processing and automation. The JAMS .NET Class Library completely exposes JAMS to your applications, enabling easy integration without having to write additional code.

### Resource Based Scheduling

Managing batch processes across the enterprise is complex. As you add more applications and servers, the complexity increases exponentially. **JAMS** adds another powerful tool to your arsenal, Resource Based Scheduling.

A Resource can be any component that impacts your ability to process information -- disk I/O, memory utilization, database lock contention, and network bandwidth to name a few. Once you've identified your Resources, you specify which Resources are required to run your processes and **JAMS** takes care of the rest!

### PowerShell Support

**JAMS** includes a PowerShell Host for executing PowerShell scripts. The PowerShell Snap-in comes with more than 20 **JAMS**-specific cmdlets and a **JAMS** Provider to expose your **JAMS** objects to PowerShell.

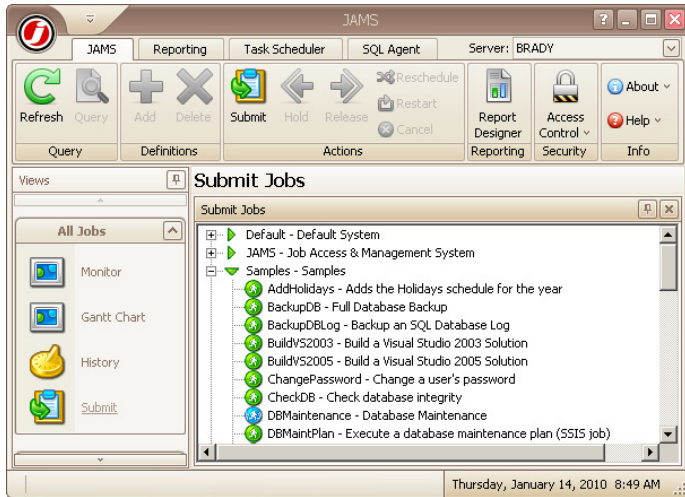
### Date Specifications

Date specifications are easy! **JAMS** uses natural language date specifications, not complicated codes. **JAMS** understands any date specification you create:

- "WEEKDAYS"
- "FIRST DAY OF MONTH"
- "LAST DAY OF MONTH"
- "3RD WORKDAY OF PERIOD"
- "2ND TUESDAY OF NOVEMBER"

### Workflow Foundation Support

**JAMS** provides reliable, enterprise support for hosting your Workflows. **JAMS** includes WF Activities which lets you integrate JAMS into your WF business processes.



### Setups

Setups make it easy to define a stream of jobs that can then be managed as a single entity. The jobs in Setup can be running on any operating system. **JAMS** takes care of all the details of sequencing and scheduling the individual jobs.

### Security

**JAMS** is completely secure due to the detailed access control. For example, a user may be able to submit a job without being able to see the job definition. And, you don't have to be an administrator to use **JAMS**.

### Parameters

**JAMS** has the best parameter handling in the business. Each process can have up to 255 parameters. When an operator or end user requests a job, **JAMS** will display "fill-in-the-blank" forms to obtain values for a job's parameters. **JAMS** also has many features that ensure the correct values are passed to scheduled jobs.

### Dependencies

A **JAMS** process can have an unlimited number of associated job and file dependencies. A job can depend on the completion of another job, the completion of a remote job or the presence (or absence) of a file.

### Job Audit Trail

**JAMS** tracks all processes that run across your systems and documents any changes made to the schedule. If someone makes a change to the schedule, you can instantly see who made the change and when.

### Notifications

**JAMS** can alert you to any issues or problems that may arise. You can be notified when:

- Jobs fail
- Jobs complete successfully.
- Jobs take too long to complete
- Jobs stall
- Jobs run too quickly

### Load Balancing

**JAMS** provides complete server load balancing. **JAMS** can off-load jobs to servers that are less busy thus enabling you to make the most efficient use of your resources.

### 24x7 Technical Support

It only makes sense that the World's *Best* Solutions are backed by world-class support. That's why 24-hour technical support is standard for **JAMS** customers. You may never need to call us at 2AM, but it's nice to know we're here if you need us.

### Customers

**JAMS** is used by leading organizations in every industry. Customers include:

AbitibiBowater	BC Lottery Corporation
BNSF Railway	Boeing
British Petroleum	CVS/Caremark
Disciple Data	Electrabel
FINRA	Golden One Credit Union
JPMorgan Chase	Kaiser Aluminum
Lighthouse1	MillerCoors
Neutrogena	Newell Rubbermaid
Novelis Corporation	The Hartford
TVO Canada	Union Bank
USable Life	Wellington Energy

**For a FREE demo of JAMS, please visit [www.JAMSScheduler.com](http://www.JAMSScheduler.com).**